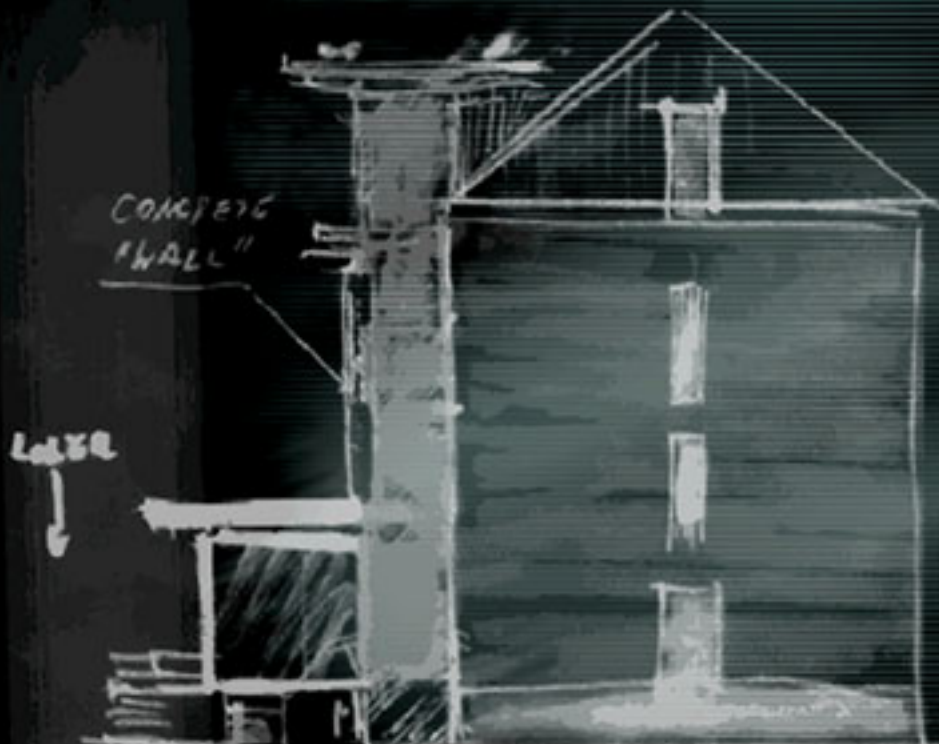


6. Heidelberger Praxisseminar Passivhäuser 14.Nov.2007

Anwendung von Passivhaus – Elementen in historischen Gebäuden

Klimaschutz versus Denkmalschutz ?



Beate Schneider

Osika GmbH, Ludwigshafen ,
www.osika.de

Armin Schäfer,

AAg Architekten Heidelberg ,
www.architekten-ag.de



Limburgstr. 19

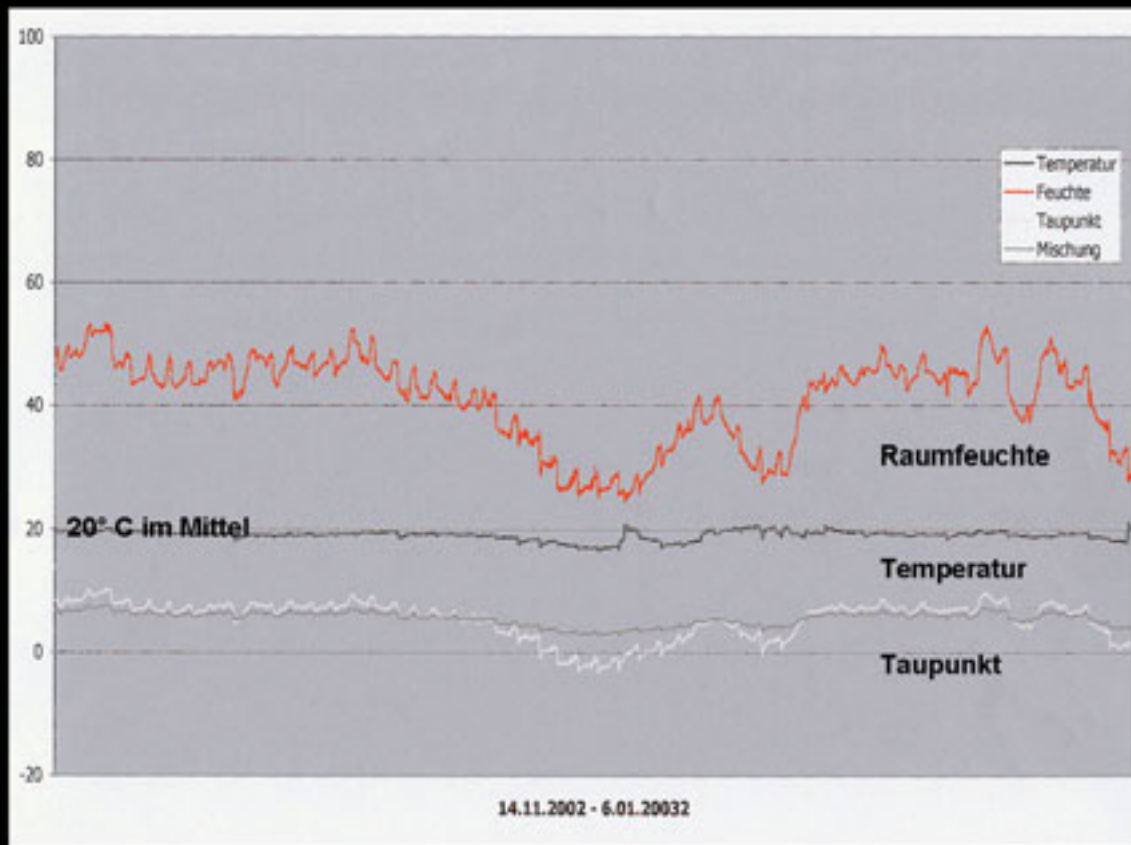


Limburgstr. 21

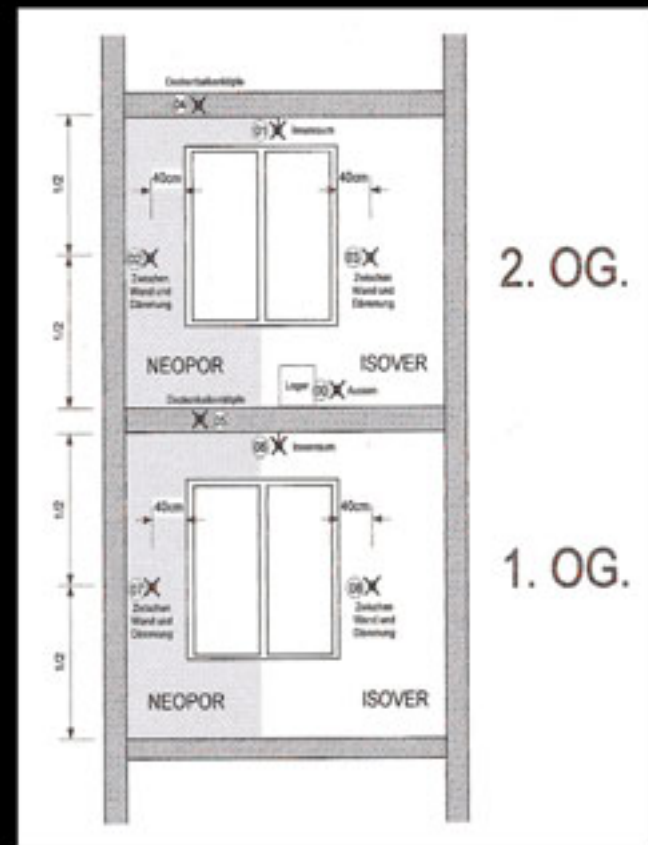








Measuring record showing humidity, temperature and dew point shifts



Scheme for built-in the sensors and the two different materials of insulation for the study









"CO2-neutral short distance heat supply" with biomass, solar energy in combination with high energy efficient rehabilitation



Decentralized Ventilation system with heat recovery



System of internal insulation





